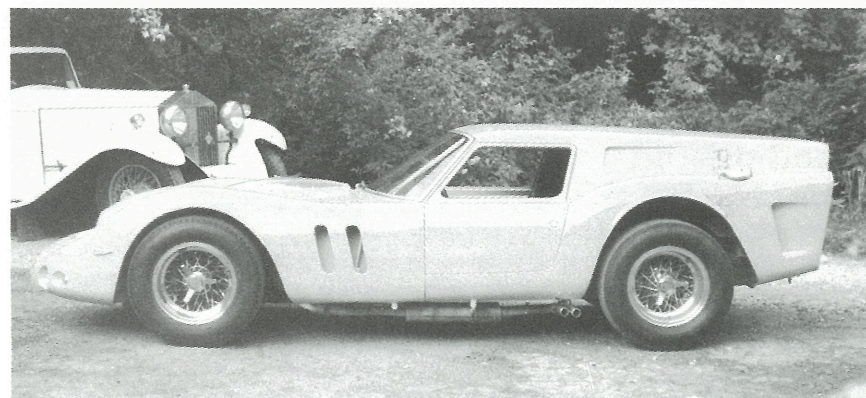




**Barnato Brooks**  
LIMITED



The 250 GTO Ferrari 'Breadvan'.

<b>ALFA ROMEO</b> 1968 Alfa Romeo Red/Black Spyder Duetto Hard/Soft Top	POA	Mk1 3.4 manual, overdrive, Indigo Blue/Grey, restored 1990, a rare opportunity to purchase this limited edition	£10,500
<b>ASTON MARTIN</b> 1965 DB5 BRG/Black. This car has just completed restoration by well known Aston specialist. All numbers match. Engine rebuild to vantage specification. Now finished to concours state	£39,950	XJ6C 4.2 a very beautiful example, very low mileage and history	£7,500
DB6 Mk1 Blue/Red CWW. Fully restored, superb	£32,500	<b>E TYPES</b> Series II 4.2 roadster, Green/Black, LHD, very sound car, restored 1990	£23,000
DB6 MkII Silver/Blue CWW. Restored and beautiful	£37,000	Series II roadster, BRG/Tan, hood and soft top, chrome wire wheels, originally RHD	£25,000
DB6 Blue/Blue Manual. Ex Lyndon Simms car, now completing total restoration.	£23,950	Series III roadster, Red/Black, originally RHD, currently undergoing restoration	£38,500
<b>AUSTIN HEALEY</b> Austin Healey 3000 MkIII RHD BRG/Black O/D WW, very good condition, much work done	£19,950	S1 3.8 roadster, Gunmetal/Red CWW just finishing total restoration	POA
Austin Healey 3000 MkIII PH2 RHD Blue/Cream/Blue CWW O/D, beautifully restored	£24,500	SIII FHC, Dark Blue/Blue bare metal respray, in excellent overall condition	£13,950
<b>JAGUARS</b> XK 150 Roadster manual, White/Tan, RHD, extremely rare car in very good condition	£29,950	<b>MG</b> MGB GT manual overdrive, chrome bumper model, much money spent on restoration, new wings, floors, doors, tailgate etc	£3,500
		MG Midget SIV, immaculate body and mechanics	£3,750
		<b>TRIUMPH</b> 1974 Stag, manual, one owner, 59k, full service history, recent bare metal respray, superb	£12,950

We offer service and restoration for the enthusiast, be it a minor adjustment, MOT or total restoration. We have recently completed restoration of 2 E types, 1935 Lagonda, Healey 3000 SIII, Lightweight E Type. Currently we are restoring Bentley, Lotus, E Type, Aston Martin, Healey and TR.

We should be pleased to quote for your car.

We also have a number of miscellaneous spares, particularly for Jaguars; please phone us with your needs.

**Telephone: Stamford (0780) 783992**

**PRICE WATERHOUSE**

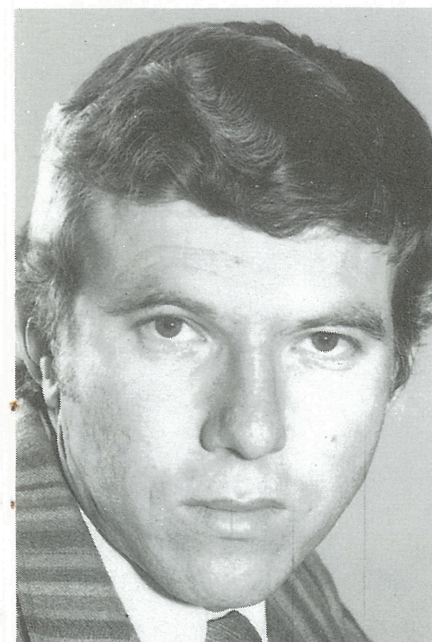
*wish*

**THE ORGAN FESTIVAL**

*every success*



**Price Waterhouse**



Eddie Davey is chiefly an exponent of French organ music and was the first South African organist to perform the complete organ works of César Franck and the SA premières of major works by Dupré and Messiaen.

Recently appointed Professor of Organ at the University of South Africa in Pretoria, Eddie Davey has received numerous awards and honours including organist for the inauguration ceremony of President F W de Klerk.

In addition to regular international concert performances he is a consultant for new, restored and reconstructed pipe organs in churches and concert halls.



## The Frobenius Organ Oundle School Chapel

Since its installation in 1984 the Frobenius organ in the Chapel has increased the musical reputation of Oundle School and has been the inspiration for the International Organ Festival.

It has been played by many distinguished organists; among them Carlo Curley, Lionel Rogg, Gillian Weir and Nicolas Kynaston.

Placing the organ high in the West Gallery gives the best

sound projection. The case contains wooden soundboards, 2,300 pipes of top quality tin and zinc and copper blown by low pressure wind, making the organ very responsive to the performer's every nuance.

The organ is built on classical lines with mechanical action. This feature is now accepted as the best for teaching and correct musical interpretation. It is not large, having 35 stops over three manuals.

## Eddie Davey

**Organ Recital**  
**Oundle School Chapel Monday 13 July 7.30pm**

**Choral No. III in A minor** *César Franck (1822-1890)*

Franck's Trois Chorals were published posthumously. This third piece begins with two opposing ideas: the toccata figurations of the opening and the hymn-like melody which follows. After a central slow section, with Wagnerian chromaticism, the two themes are superimposed. The triumphant ending is hard-won and magnificent.

**Dialogue in C major** *Louis Marchand (1669-1732)*

This substantial piece is from the Versailles manuscript dated 1696, part of the small collection of Marchand's published work. Although it has little of the elaborate, elegantly crafted style of Couperin, the Dialogue is nonetheless a fine composition. It establishes contrasts between more than just two different registers.

**Choral No. I in E major** *César Franck*

Dedicated to the organist and composer Eugène Gigout, this Choral is more rhapsodic in structure than No. III. It is also based around two themes heard at the outset; the first a lyrical melody, characterised by an expressive use of ties across the bar, the second, once again, hymn-like in manner.

**Prelude and Fugue in D BWV 532** *J S Bach (1685-1750)*

Probably dating from Bach's Weimar years, this multi-sectional work has a strong sense of youthful high spirits and a delight in technical dexterity. Beginning in the manner of the stilus fantasticus it demands some nimble footwork, then continues with a large-scale contrapuntal allabreve. The fugue is a spritely one, ending with mischievous wit.

**Dialectic Fantasy** *Jacobus Kloppers (b 1937)*

"It is a privilege to première an organ work by Jacobus Kloppers. True to its inherent nature, this composition successfully fuses musical opposites according to underlying rational and emotional principles. It is a challenge for both the organist and the possibilities of the organ itself; with the work's dissonant density and often complex texture, a high quality instrument is indispensable." Eddie Davey.

**Final Opus 21** *César Franck*

The last piece from Six Pièces, the final opens with a grand pedal solo, well suited to the richness of a Cavaillé-Coll's pedal reeds. Then a more subdued melody is heard from the manuals, characteristically formed out of brief, one-bar phrases. The pedal solo returns in G minor before an emphatic climax is reached in which manuals and pedals compete for the theme. After a quiet central section, the final pages feature archetypal gestures of Romantic organ music and the piece closes dramatically.

**Tonight's Twilight Concert**  
Glenda Simpson and Barry Mason  
– The Age of Discovery –  
Yarrow Art Gallery at 9.55pm  
*See page 21 for programme details.*