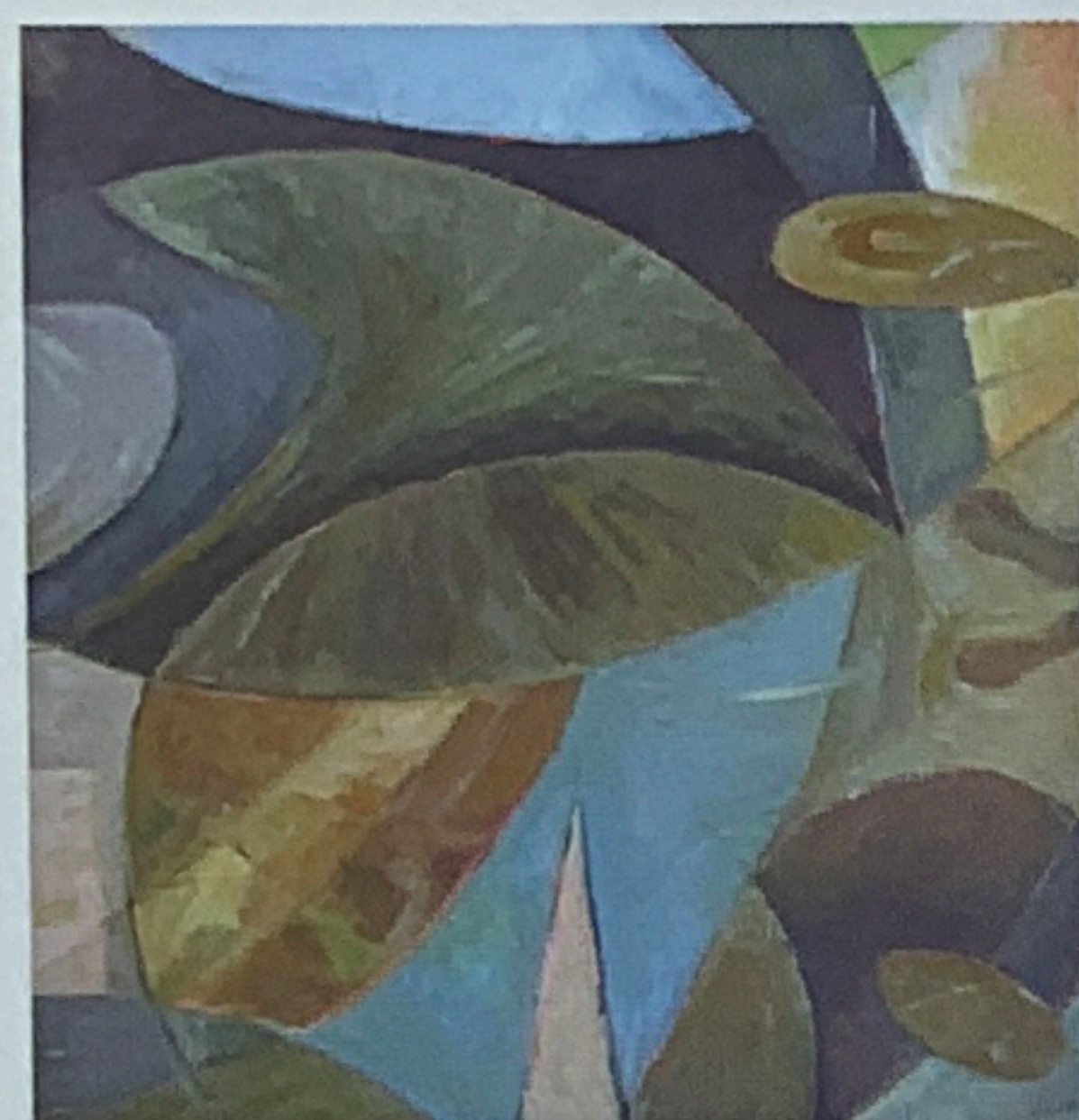


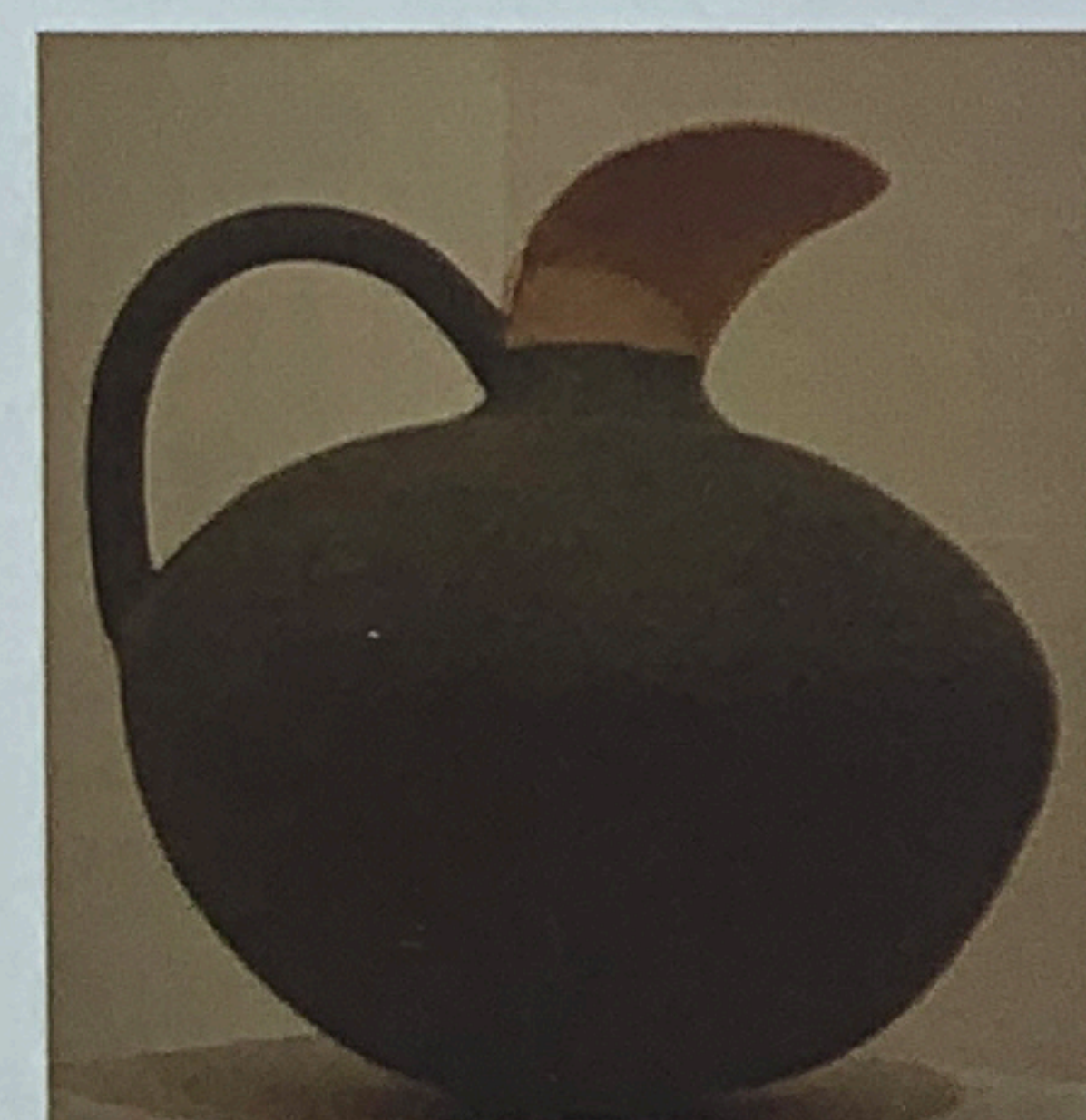
## Private View

## Oundle Showcase

6pm - 9.30pm Yarrow Gallery Oundle School



*Nene Valley: oil on canvas  
by Carol Parfitt*



*Gunta Krumins: Mosaic Jug*

Exhibition continues Saturday 14 July to Saturday 21 July,  
10.30am - 7.30pm (weekends)  
12.30pm - 4.30pm (weekdays)

A varied group of professional fine artists and crafts makers have exhibited in Oundle for over ten years. This is to be their last exhibition together. It promises to be a stunning visual treat and a beautiful experience of matter where objects dance off the wall, move across the horizontal plane or sit squarely on a plinth. Paintings, ceramics, textiles, sculpture and glass will be represented to excite the imagination.



*Didel Bish*

## Haydn Youth String Orchestra

Conductor Jan-Ype Nota  
with Didel Bish, piano

8pm Oundle School Chapel

Tickets £11 / £9 (£5 under 21)

W A Mozart

Piano Concerto no.13 in C

Ralph Vaughan Williams

Fantasia on a Theme of  
Thomas Tallis

Dmitri Shostakovich

Chamber Symphony in  
A flat major Op.118A

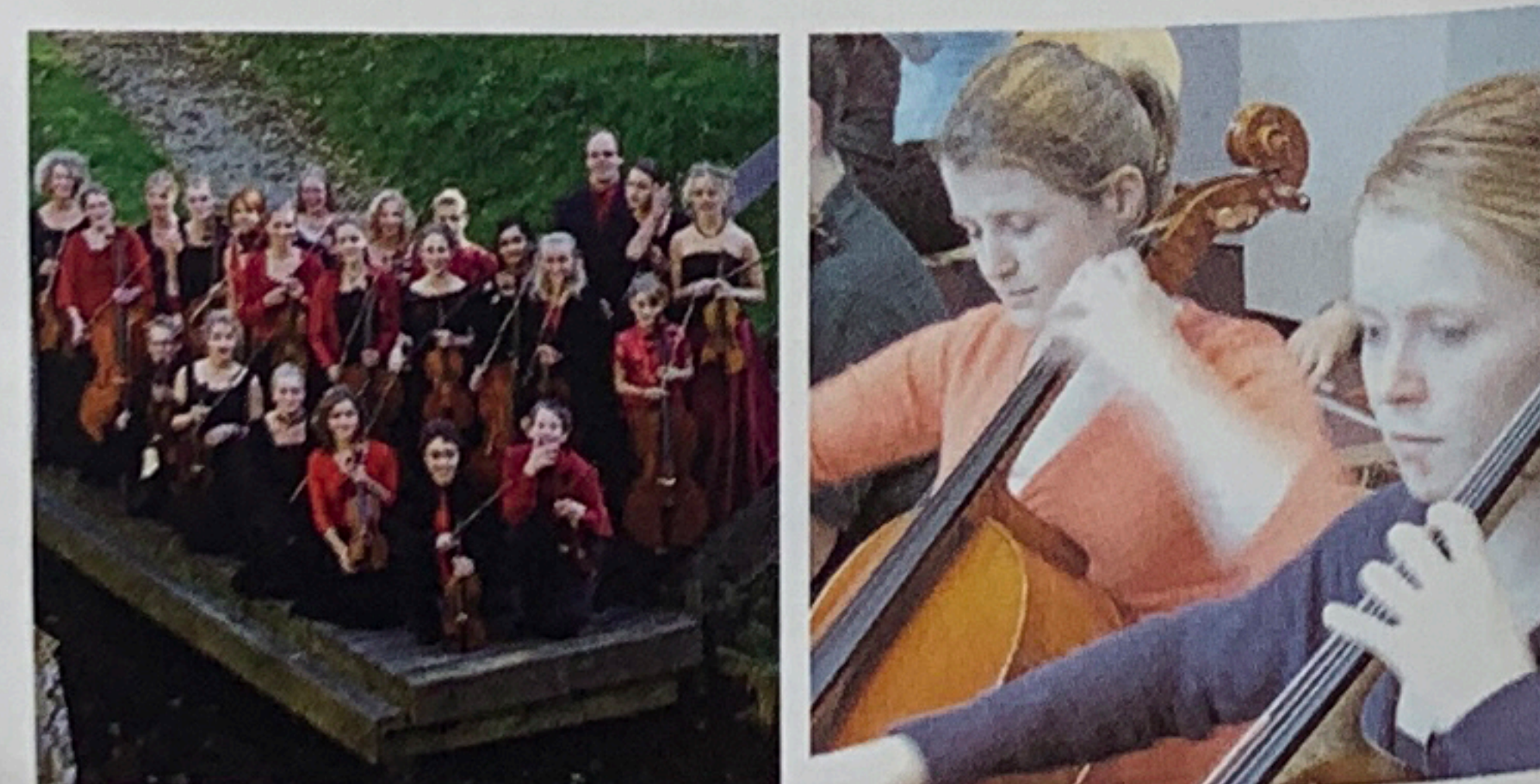
This young and talented orchestra from the Netherlands (all players are aged between 12 and 19) is very used to travel, with recent concerts in Belgium, France, Spain, Portugal, Austria, Italy and the UK. Their wide-ranging programme for Oundle combines the brilliance of a Mozart piano concerto with the glorious Fantasia of Vaughan Williams and the dynamism of Shostakovich.

*Please join us for a glass of bubbly before the  
performance, with our compliments.*

Bar open before concert and during the interval

Concert ends at approximately 9.45pm

Sponsors: Richard and Jean Winfrey



## Picnic in the Park

## Killer Queen

## Sticky Wicket

and his Fabulous Swing Band  
The OGs

Fireworks by 1605 Fireworks of King's Cliffe

7.30pm (gates open 5pm)

Poplars Field, Pavilion Drive, Oundle

Tickets £16 to £19 in advance,  
£22 on the door

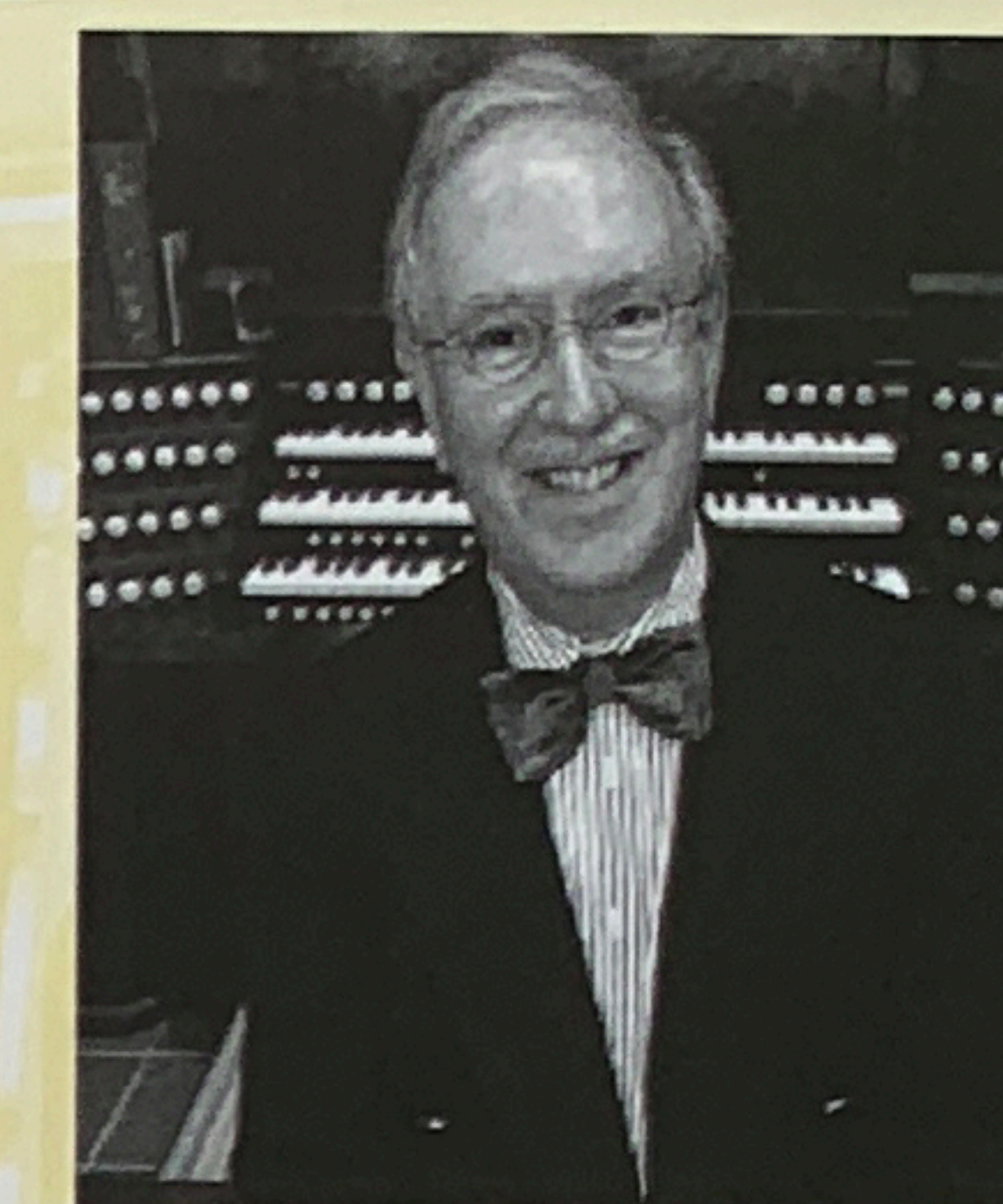
Three fantastic bands, a huge dance floor, bars (Pimms, wine, real ale), Oundle delicatessen, hog roast, crêpes stall, entertainers.... this concert has it all, and fireworks too!

Free car parking adjacent to concert site. A limited number of sites is available for pre-booked canopies only, £22 each – please tick box on the booking form.

Please bring a picnic and chairs or rugs; no formal seating is provided.

Performance ends at approximately 10.55pm

Supported by GreenStones and HC Solicitors



## Celebrity Organ Recital

## Colin Andrews

5pm Oundle School Chapel

Tickets £9

The arresting chords and cascades of Bonnet's *Variations de Concert* launch the Festival's established series of celebrity organ recitals. Welcome back to Colin Andrews, who is Lecturer in Organ at East Carolina University, US, and a familiar face on the Oundle for Organists summer school team. His attractive programme also features music by Bach and movements from Messiaen's *La Nativité*, which Colin has just recorded for release on the Loft label.

Performance ends at approximately 6pm